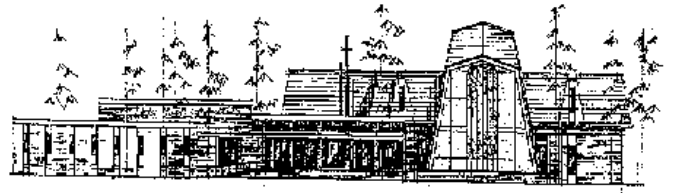


The Encounter



Monthly Newsletter of
St. Matthew's Lutheran Church
612 S. College Road
Wilmington, NC 28403
E-Mail: stmatth@bellsouth.net
Website: stmatthewsch.org

"The Church with a *WELCOME*"

Established 1892

A Stephen Ministry Congregation

Volume 10

SEPTEMBER 2010

Number 9



Saint Matthew's Healing Committee (Helen Stansbury, Ruth Smith, Saville Riesz, Jenna Rickets, Alan Hunsberger and Bill Davis) held our second meeting on August 3rd. Rev. Phil Tonnesen from the Bishop's Staff facilitated the meeting.

All of the committee members had some feedback from our email and our article in the August Encounter. Much of the feedback was in the hopeful and positive vein but some was in a gloomier mode not expecting any real results. The committee hopes that our activities will be able to shift this gloomier view to a hopeful one. One request came to us to see if the committee could help to settle a particular ongoing issue. All of the members of the committee have a strong desire to solve problems facing the congregation. We discussed what our role should be in working to solve specific issues. The Healing Committee's charter from the church council does not give us the authority to undertake specific actions on specific issues, but we can recommend processes that would help ease ongoing issues and keep them from happening in the future. St. Matthew's constitution has a process that follows Matthew 18:15-17 for the discipline of members. The committee's role is more as a facilitator for St. Matthew's healing. We will discuss our charter in more detail and decide whether we want to suggest any amendments to the council.

The committee listed the following issue themes and sub-themes based on Listening Posts comments: pastor issues, youth and Christian education, finances and budget, communication, a desire for restoration, more involvement from all at St. Matthew's, appearances can be deceiving, ELCA decision on human sexuality, property and facility issues, and impaired functioning of the council. We will develop a complete set of themes and sub-themes and identify the most important ones.

Our next committee meeting will be on August 18th. Since we are now well underway and since we need to meet fairly often, Rev. Phil will be a resource person for the committee rather than a facilitator; and he will not attend this meeting.

Yours in Christ,
The Healing Committee

Greetings from Pastor Sam...

Dear Sisters and Brothers,

One of my theology professors had a wonderful way of engaging unchurched people in cabs or airplanes or stores. When they learned that he was a pastor, they would say, "I don't believe in God, because of all the terrible things that happen in the world." He would respond very gently, "Tell me what kind of god you don't believe in, and I probably don't believe in that god either."

For those of you that have read J.B. Phillips classic "Your God Is Too Small," you will recognize my professor's spot-on approach. Many people have a god shaped by their experiences with others rather than by disciplined study of the Bible. And some, even when they do study the Bible, the hermeneutic (interpretive lens) through which they view the text may well be, as Phillips said, too small. Indeed personal experience can often produce a god that looks pretty much like the person we see in the mirror.

One major reason I remain a Lutheran is that our confessional documents always read Scripture through what we call the Law/Gospel hermeneutic. God has two words, "No" and "Yes." Without understanding God's No, the word of judgment and finally death, then we can't begin to make sense of God's Yes in Jesus Christ. Without God's No, the Jesus that people believe in will bear very little relation to the Jesus of Scripture.

During my college and seminary days and even my youngest days as a pastor, I was shaped by the revolutionary language and thinking of the 60s. Much of that time I lived as a minority in the ghetto. I lived and worked among the very poor. I subscribed only to left-of-center publications and began to preach a kind of socialist bumper sticker theology. It was a form of self hatred for having come from hardworking, patriotic, conservative small town roots.

Two authors had a profound influence on me and brought me to a more integrated place as a Christian and as a pastor. First, reading Martin Luther King's "Letter from the Birmingham Jail" reminded me how easily we white liberal pastors said all the right things while breathing the rarified air in our ivory towers. Second, reading Will Campbell's confessional book "Brother to a Dragonfly" made me examine where I came from and who I really was as a human and a Christian. If you've never heard of Will Campbell, the self-proclaimed Apostle to the Rednecks, then you need to know that he was the inspiration for Brother Will B. Dunn in Doug Marlette's comic strip "Kudzu."

After King and Campbell, a third author, Presbyterian Frederick Buechner, taught me what Aristotle meant by his famous dictum: the unexamined life is not worth living. Buechner wrote that one needed to listen to one's life, the pain and the foolishness, to be able to see God at work bringing good out of evil. A fourth author, Madeleine L'Engle, in her four-book Crosswicks Journal taught me to take time to reflect upon and see God at work in the (extra)ordinary gifts, the people and places in my life.

It's been said that when the pope met St. Francis of Assisi, he refused to allow Francis to kiss his ring. Rather, the pope knelt and kissed Francis' feet in recognition of his holiness. Now I am only an ordinary parish pastor of a midsize church, but some of the authors I have mentioned helped me to understand that I need to, like that pope, recognize there is at least one rare holy person in each parish and such people usually don't have advanced degrees, wealth, or status. In fact, they usually don't get much recognition or attention as they humbly serve. When you find such a person, they are steeped in Scripture and not in a merely intellectual way. They are people who regularly converse with a very big God in a very personal way. And they joyfully keep going amid huge struggles and challenges, because they are following Jesus!

By way of contrast, bad theologians are usually immature Christians who think too highly of their own insights and of their own experiences and relationships. And because all of us have been influenced by the people we read and the people we meet, we need some checks and balances on the tiny gods we create in our own image. Too often we surround ourselves with people who think like us and who share our prejudices, and very soon we become the kind of Christians whose worldview and beliefs are less and less true to the God who has given us not only the gift of Holy Scripture, but more importantly, His own Son to reclaim the world!

In the East Texas culture of my childhood, they would say, "It takes all kinds to make a world," which wasn't so much a comment on diversity as it was an unspoken "What next?" accompanied by a slow shake of the head.

As we start a fall semester of activities and classes at St. Matthew's, I hope you will examine your life and admit your god is much too small and too comfortable. If you keep making god in your own image or in the image of those you love, you'll be less and less able to recognize and be shaped by the Triune God – Father, Son, and Holy Spirit.

This is just a small way of reminding both you and me that there's no Hall of Fame for living Christians – no matter how old we get. And so, faithful worship, disciplined study, and regular prayer will change each of us when it's not about us!

Your brother in Christ,



Pr. Sam Zumwalt, STS

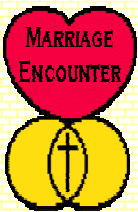
szumwalt@bellsouth.net

www.societyholyltrinity.org



Confirmation begins on September 15th at 7 p.m., with an orientation for youth in the 6th-8th grades and their parents. We will meet in the Sanctuary to go over expectations, schedules and program. First teaching night will be the following Wednesday, September 22nd at 7 p.m.

Confirmation lock-in is scheduled for Friday, October 22nd. A sign up sheet is on the youth board along with information. This will be a combination of teaching and fun activities.



MARRIAGE IS A JOURNEY!

God so loved us that he gave His only Son for us.
Do you love your spouse enough to give up a whole weekend to be only with them?
Attend a **Lutheran Marriage Encounter Weekend** and rediscover each other and God's interest in your marriage.

For more information visit our website at www.GodLovesMarriage.org or call 800-235-1010.



Stephen Ministry News—Receptivity to Care—Part I

Most people are much more open to giving care than to receiving it. When a person is giving care, he or she is in a position of strength, stability, and authority. When a person is receiving care, he or she is acknowledging weakness, insecurity, and vulnerability.

As a result, there are countless people today who could benefit from a Christian friend who would listen and care for them but instead tough it out on their own. They remain the strong silent type or wear a smile across a face that his holding back a flood of tears. To show weakness is to admit inferiority.

But God did not create us to be independent. We were created to be interdependent. God's Word is clear on this all the way back to Genesis: "It is not good for the man to be alone. I will make a helper suitable for him" (Genesis 2:18). The New Testament underscores this theme with more that 50 verses that contain the words "one another." These verses include admonitions such as "love on another," "encourage one another," "build up one another," and "pray for one another."

What these verses don't say is that we alone are to love, encourage, build up, and pray for other people. The "one another" wording gives them a **reciprocal** meaning. It also tells us that we are to allow other people to love, encourage, build up, and pray for us!

Next month we'll continue with this article on receptivity to care. We hope that these few paragraphs give you something to think about. If you need a Stephen Minister please contact us, our team of Stephen Ministers are ready to listen, encourage, and support you in a time of need. For more information about how to connect with a Stephen Minister, contact Pastor Sam Zumwalt (791-4582), Ana Maria Jackson (791-3262), or Bob Gatewood (686-9413).

Come to me, all you who are weary and burdened, and I will give you rest. Matthew 11:28.



Lutheran Youth Organization Retreat

September 11th -12th, LYO will be here at St. Matthew's in the gym. If you are interest in joining us for a day of service work and fellowship please call Nancy Magruder at 791-4582 ext. 212. Youth from around our area and toward Raleigh will be joining us, so it really should be a fun weekend.



Lectio Divina

Lectio Divina Prayer Group, Exploratory Meeting will be held 9:45 AM on September 12th in room 117 across from the choir room. What is Lectio Divina? The phrase, pronounced *lectseeo deeveena*, literally means "divine reading," and is an ancient practice of praying the scriptures. This is a more contemplative form of prayer, not praying petitions to God but prayerfully listening for His voice as we contemplate his Word. The Adult class of Vacation Bible School learned about this as we discussed our own spiritual types. If you are interested in learning more, please join us on September 12th.

Looking Ahead



Rally Day - Sunday, September 12th, 9:45 a.m.

Rally Day Activities in the nave.

New Member Orientation - Saturday, September 18th, 9 a.m.

This class is for all confirmed Lutheran adults wishing to transfer membership to St. Matthew's or returning to the Lutheran church, and adults that previously attended the New Disciples' Class. Please register with Donna or Cherry in the office at stmatth@bellsouth.net or 791-4582.

St. Matthew's Anniversary Weekend and Congregational Luncheon - September 18th-19th

Kent Peterson, former Associate Pastor, will be the guest preacher at all services. Congregational luncheon will be in McSwain on Sunday, September 19th at 12:30 p.m.

WIHN (Wilmington Interfaith Hospitality Network) - October 3rd-9th

We will be hosting homeless families in the McSwain Activity Center. Be sure to check the sign-up sheets to see where you can serve.

Carl Voges "Seven Marks of the Church" and guest preacher - October 30th-31st

Carl Voges, Vicar for the Society of the Holy Trinity, will have a seminar on "Seven Marks of the Church" on Saturday, October 31st and will be the guest preacher at all services.

High School Youth Lock-In - November 19th

Please see Youth board for details and to sign up.

Parents Day Out - December 4th, 8 a.m.-1 p.m.

More information to be announced later.

Annual Ladies Tea - December 4th, 3 p.m.-5p.m.

This annual event for the ladies of the church will be held in McSwain Activity Center. An assortment of teas and desserts will be served. Ladies, feel free to bring a friend with you.

Christmas Play, December 12th, 12:30 p.m.

The Christmas Play will be held in McSwain Activity Center. More details will be posted later.

Thank You!

To members of St. Matthew's,

Thank you for your prayers during the illness of my brother, Kenneth Brause, and your expressions of sympathy after his death. Peter and I were able to visit him just before he died.

Every note and call was appreciated and we are grateful for your kindness.

Virginia Parisek

Thank you for your prayers, phone calls and concerns during Pete's recent heart catheterization. Everything went well and we appreciate Pastor Sam's visit with Pete before his procedure.

In Christian Love,
Pete, Grace, Kathy and Mike Koder



OWL's will meet on Thursday, September 24th at 11:30 in the gym. The meal will be catered from Middle of the Island and will be BBQ chicken, baked ham, scalloped potatoes, squash casserole, green beans, corn, potato salad, and banana pudding.



Youth Annual Fall Festival is scheduled for Saturday October 30th from 11am-3pm. Please mark your calendars and invite friends and family. There will be games, food, hay ride, cake walk and a haunted house.



Youth meet each Sunday in the gym at 6pm for a dinner followed by group time.

Youth group is open to all 6th – 12th grades.

While you do have a meal together you do have individual group time.

Youth group schedules and activities are on the youth board outside the church office.

There will be no Youth Group on November 28th and December 26th.

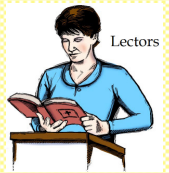




Congratulations to our new Music Ministry Staff

Bill Glisson has been appointed Director of Music.
Amy Tucker Morgan has been selected as our new Adult Choir Director.
Teresa Hall has been selected as our new Bell Choir Director.
Both Amy and Teresa will continue to work with children's groups, as well.
Look for the new schedule information on the next page and on the calendar.
New members are always welcome.

Finally, we're still in the hunt for a part-time Instrumental Ensemble Director. If you or someone you know are interested, please contact Bill Glisson, Director of Music at 791-4582.



To those who serve in worship...

First, thank you to all who lovingly serve the Lord by volunteering for the various positions in the worship service. That includes the altar guild, greeters, lectors, acolytes, ushers, assisting ministers and communion assistants. We have tried to update our lists to accurately reflect the service that you attend. If you find that you are scheduled incorrectly, please let the appropriate team leader know. Current schedule leaders are listed below.

Please remember that copies of the schedule for 'Those Serving' are found on the church board across from the office, posted on the Ministry board in the Commons, and in both the online and printed versions of The Encounter. The schedule is published the last weekend of the month for the upcoming month (example- the schedule for September will be available the weekend of August 28th-29th).

Also, please note that it is your responsibility to get a substitute if you are scheduled and cannot serve. This is not the responsibility of the church office. You should, however, inform the office of your substitute so that they can update the bulletin if possible. Also, if you know a month or more in advance that there is a particular date that you cannot serve, it is extremely helpful for you to let the scheduler know so that they do not schedule you for that date which alleviates getting a sub.

Thanks again for serving!

Altar Guild - Lynette Farmer

8:30 Ushers - Dick Williams

11:00 Ushers - Happy/Kristi Wade

Greeters - Vera Wilson

Acolytes, Lectors, Communion Assistants and Assisting Ministers - Gina Schiess



Update on the construction of the new LSA Home...



The new Lutheran Home in Wilmington — Trinity Grove — is definitely taking shape. The 100-bed skilled nursing facility is scheduled to open in spring 2011. Trinity Grove will feature neighborhoods with more private rooms, including a 25-bed neighborhood dedicated solely to people with Alzheimer's disease and similar types of dementia or memory loss. Secure courtyards, gardens, natural areas, and a children's playground will border the property and provide all residents and families with private, tranquil gathering places.

As of mid-August, all of the concrete has been poured, most recently in the kitchen and laundry areas. The living areas are under roof, and it is expected the rest of the building will be under roof within two weeks. The windows are due in soon, which will allow the facility to be "dried in" so that sheet rock may be installed. In anticipation of this, the electrical, plumbing, and mechanical contractors are working diligently to get all the "in the wall" items completed. According to Trinity Grove administrator John Frye, "We are pleased with progress thus far, and are looking forward to each continuing development with enthusiasm."

New Music Practice Schedules

All music groups for St. Matthew's will now practice on Wednesdays. The new schedule is:

Luther Choir 5-5:45 p.m. *(starting September 15th)*

Tone Chimes 6-6:45 p.m. *(starting September 15th)*

Handbells 6-6:45 p.m. *(starting September 15th)*

Adult Choir 7-8 p.m. ***(starting September 8th)***

Choir Sectionals 8-8:30 p.m. ***(starting September 8th)***

Our Christian sympathy is extended to...

The Family of Prue Hovis

Lynn and Mike Stophel in the death of Lynn's sister, Patti Finberg



MEMBERS

Jane Brunt	Jackie Davis	Dee and Ernie Young	Lynne Hughes
Tom Thompson	Michael Vickery	Wayne McDougald	Kay Thompson
Charlotte Harris	Danielle Bashaw	Misty Perry	Christine Gatewood
John Geiger	Carl Larson	Florence Schorschinsky	Walter and Mildred Schulz
James Ammons	Janet Somersett	Barbara & James Clemmons	Butch Ruefle
Sara Schneider	Betty Lauver	Delayne Plante	Kris Hall
Elsie Cates	Alexis Holzberger	Dean Weber	Frank Howard
Sheila Whitmeyer	Terri Dearie	Sonja Stroehl	Jo Kallenborn
Aaron Penney	Lisa Schaefer	Charles Stanland	Laura Matthess
Jayne Sanderson	Harold Shelton, Jr.	Fred Getsinger	Brigitte Walters
Diane Vickery	Jim Mees	Hilary Piper	
Frank Fauser	Earl Lindner	Steve Cottle	
Melinda Knoerzer	Lucy Bost	Nate Holway	

FRIENDS/FAMILY OF MEMBERS

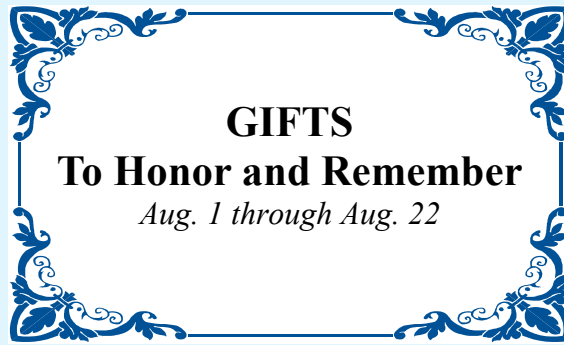
Noah Roberts	Bertha Rankin	Katherine Gatewood	Michael Durst
Tammy Bryant	Corey McDonald	Tom and Joella Hyne	Jere Strawn
John Fonger	Cindy Fentress	Joe Nobles	Jim Schmitz
Edward Capalbo	Jimmie Robeson	Darlene McCullough	Daniel & Cathy Cox
Sarah Mairs	Trevor Penney	Gary and Cindy Hogman	Zack Mayo
Christopher Geisel	Hansen Barrick	Melissa Perkins	Susan Descisciolo
Heather Thornton	Parker Brown	Lois and Dayton Gates	James Houser
Albert and Dee Smith	Keith Peifer	Kendrick Farmer	Sandra Chilcote
Billy Macpherson	Pearl Wynne	Kierstan Wildeboer	Beth Brown
Ernest Phillips	Becky Fox Ortyl	Joyce Beckwith	Tracy Lawson
Bobbie Clayton	Ann Milstead	Betty Portmann	Holly Gilliam
Brad Cook	Janice Comeskey	Rick Fritz	Shirley Winter
Alex Andron	Margaret Evans	Vic Lamb	Michelle King
John Elisberg	Martin O'Neil	Lauren & Tom Wieme	Paul Shick
Robin Lamb	Calvin Berg	Richard Shivers	Ozzie Raines
Dennis Huser	Darrin Jones	The Kenner Family	Col. Charles P. Murray
Pat Manning	Karen Brix	Michael O'Day	James Mann
Seth Ewing	Peggy Clemmons	Jerry Woodell	Bob Loughlin

REMEMBER OUR HOMEBOUND MEMBERS

Emma Brunjes, Barbara Cook, Helen Hauns, Betty Lauver, Dee & Ernie Young, Jane McDougald, Jo Kallenborn, Margaret Eller, Dorothy Weber, Bobby Seitter

Christian Sympathy is extended to the Family of the following:

William L. Hirsch	Mozelle Howard	Helen Buck	Dawn Ivey
-------------------	----------------	------------	-----------



GIFTS
To Honor and Remember
Aug. 1 through Aug. 22

HONOR OF DOROTHY BLADE

Organ Fund Nell McArver

HONOR OF FRED & RUTHANN GETSINGER

Endowment Fund Nell McArver

HONOR OF CLARE ZUMWALT'S 3RD BIRTHDAY

Endowment Fund Sam & Laura Zumwalt

HONOR OF MILTON MOSER'S 92ND BIRTHDAY

General Fund Elsie Cates

MEMORY OF DOUGLAS LOW

WIHN Fund Lee Low

MEMORY OF PRUE HOVIS

General Fund Anna Laura Martin from
Monday Bridge Club
Endowment Fund George and Susan Willets
Endowment Fund Joe Tomlinson
Endowment Fund N. Scheunemann

MEMORY OF KENNETH BRAUSE, BROTHER OF VIRGINIA PARISEK

Pastor's Disc. Fund
Pastor's Disc. Fund

MEMORY OF SARAH PRICE

Pastor's Disc. Fund

MEMORY OF EMILY WADE

Pastor's Disc. Fund

MEMORY OF CHRISTOPHER JOHNSON, SON OF MORRIS AND JOANN JOHNSON

Youth Fund Lee Low

MEMORY OF PETE McARVER

Pastor's Disc. Fund Nell McArver

MEMORY OF EDNA SHIRKEY

Pastor's Disc. Fund Pat and Larry Mahl

MEMORY OF HELEN BUCK

Fifth Sunday Fund Hilda Buck



BIRTHDAYS in September

1	Beth Moore	8	Nancy Thompson	18	Jennifer Kitchens
1	Micah Brown	8	Gabriela Wentzel	19	Nancy Magruder
2	Mary Horne	9	Wayne McDougald	19	Bill Paris
2	Christopher Wilson	9	David Haskins	19	Lindsey Schaeffer
3	Ian Brambell	9	Nancy Brown	19	Steve Brewbaker
3	Mary Allison	10	Barbara Christmas	20	Darlene Schucker
3	David "Dusty" Pilcher	11	Renee Mayberry	21	Claire Houser
4	Carol Comeskey	11	Megan Brambell	22	Karin Cook
4	Irene Shea	11	Virginia Bjorkquist	23	Ryan Christmas
4	Christopher Scott	11	Dennice Graef	23	Jill Cummings
4	Christine Gatewood	12	Dean Weber	24	Richard Chinn
5	Karen Ruefle	12	Arlene Robie	24	Linda Holway
5	Preston Gourville	13	Jackie Robey	24	Nathan Catts
5	Dennis McCain	13	Alexis Lariviere	25	Melissa Funke Flanagan
5	Nan Phillips	13	Kaitlin Davis	25	Nell McArver
5	Megan Kline	14	Trevor Penney	26	Dee Young
5	Jake Sharpe	15	Mario Piccinin	26	J. Hollamon
7	Ina May	15	Elaine Willow	27	Dawn Benton
7	Yvonne Jones	16	Sheila Mallo	28	Judy Benson
7	Tracey Kitchens	16	Alexandra Schwartz	29	Alexander Monroe
8	Kevin Gallagher	16	Ashton Prehar	30	Patti Erkes
		16	Ray Porter	30	Annette Janssen
		17	Nadia Bendahmane	30	Carl Larson
		18	Ted Hueskes		



2	Paul & Lori Haskins	4	Bill & Tracy Gourville	21	Dave & Terri Robertson
3	John & Deborah Pollard	4	Pastor Sam & Laura Zumwalt	22	James & Amber Brekhus
3	David & Terri Robey	6	Norman & Helen Walter	25	Peter & Debbie Gimbal
3	Art & Jan Magnus	10	Christopher & Heather Catts	28	Bob & Betty Lentz
		11	Jake & Danielle Sharpe	30	John & Lynn Stemke
		21	Jim & Sheila Whitmeyer	30	Ken & Gina Schiess

Sun	Mon	Tue	Wed	Thu	Fri	Sat
 <h1>September</h1>			1 8:30 Men's Breakfast 6:00 GS #354	2 9:00 Exercise class 11:30 Endowment Comm. meeting 4:00 GS #495 & 739 5:45 T.O.P.S. 7:00 AA 7:00 Boy Scouts	3 Hospice Dinner - Cathy Aleksandravicius	4 6:00 Worship with Communion 8:00 AA
Church office hours 9 AM to 2 PM this week.						
5 8:30 Worship with Communion 9:45 Adult Summer Sunday School 11:00 Worship with Communion 1:30 GS #226	6 Labor Day Church office will be closed. 6:00 Evening Prayer & Bible Study 7:00 AA	7 9:00 Exercise class 10:00 Prayer Group 6:30 Contemporary Service Practice 6:30 Stephen Ministry 8:00 AA	8 8:30 Men's Breakfast 6:00 GS #354 6:00 Crossways 7:00 Adult choir rehearsals begin 7:00 Confirmation Guide Orientation	9 9:00 Exercise class 10:00 Crossways 4:00 GS #495 & 739 5:45 T.O.P.S. 6:30 Council 7:00 AA 7:00 Boy Scouts	10 LYO Regional Meeting	11 LYO Regional Meeting 6:00 Worship with Communion 8:00 AA
12 Rally Day 8:30 Contemporary Worship with Communion 9:45 Rally Day Activities 11:00 Worship with Communion 1:30 GS #226 LYO Regional Meeting concludes	13 6:00 Evening Prayer & Bible Study 7:00 Constitutional Council Meeting 7:00 AA	14 9:00 Exercise class 10:00 Prayer Group 6:30 Cub Scouts 8:00 AA	15 8:30 Men's Breakfast 6:00 Crossways 6:00 GS #354 7:00 Confirmation Parent/Child Orientation Additional Music Groups Begin-see schedule below. 	16 9:00 Exercise class 10:00 Crossways 4:00 GS #495 & 739 5:45 T.O.P.S. 7:00 AA 7:00 Boy Scouts	17 Hospice Dinner- Margaret Ballantine & Judy Daniels 5:00 Cub Scout Lock-In begins	18 9:00 New Member Class 11:00 Cub Scout Lock-In ends 6:00 Worship with Communion 8:00 AA
19 St. Matthew Sunday 8:30 Worship with Communion 9:45 Sunday School 11:00 Worship with Communion 12:30 Congregational Luncheon 1:30 GS #226	20 6:00 Evening Prayer & Bible Study 7:00 AA 7:00 LSM Dinner	21 Feast of St. Matthew 9:00 Exercise class 10:00 Prayer Group 6:30 Contemporary Service Practice 6:30 Stephen Ministry 6:30 Cub Scouts 8:00 AA	22 8:30 Men's Breakfast 6:00 Crossways 6:00 GS #354 7:00 Confirmation study	23 9:00 Exercise class 10:00 Crossways 11:30 OWL's Luncheon 4:00 GS #495 & 739 4:00 Children's Schoolhouse open house 5:45 T.O.P.S. 7:00 AA 7:00 Boy Scouts	24 6:30 Via de Cristo Ultryea Gathering	25 6:00 Worship with Communion 8:00 AA
26 8:30 Contemporary Worship with Communion 9:45 Sunday School 11:00 Worship with Communion 1:30 GS #226	27 6:00 Evening Prayer & Bible Study 7:00 AA 7:00 LSM Dinner	28 9:00 Exercise class 10:00 Prayer Group 6:30 Cub Scouts 7:00 BSA Order of the Arrow 8:00 AA	29 8:30 Men's Breakfast 6:00 Crossways 6:00 GS #354 7:00 Confirmation study	30 9:00 Exercise class 10:00 Crossways 4:00 GS #495 & 739 5:45 T.O.P.S. 7:00 AA 7:00 Boy Scouts	<u>NEW MUSIC SCHEDULE!</u> Starting September 8th: Adult Choir - Wed. 7-8 p.m. Choir Sectionals - Wed. 8-8:30 p.m. Starting September 15th: Luther Choir - Wed. 5-5:45 p.m. Tone Chimes - Wed. 6-6:45 p.m. Handbells - Wed. 6-6:45 p.m.	

Those Serving in September 2010

COMMUNION ASSISTANTS

Saturday: 4-Bill Fox and Jan Christine
11-Carrie McDonough, Phil Bloedorn
18-Gary and Kay Faircloth
25-Shirley Fischer, Jean Manley

Sunday:

5 8:30 Becky Howard,
Frank and Renate Gray
11:00 Bob and Christine Gatewood,
Lynn and Peyton Hughes
12 8:30 Richard and Sophie Williams,
Scott and Melissa Holzberger
11:00 Linda and Saville Reisz,
Stan Brunt, Lynette Farmer
19 8:30 Bill Piper, Nancy Magruder,
Carolyn Hooker, Sandra Humphrey
11:00 Helen Stansbury, Nancy Miller,
Ellen James, Danielle Bashaw
26 8:30 Bill Paris, Terri Dearie,
Linda Renzaglia, Nancy Wells
11:00 Ana Maria Jackson, Robin Hueskes,
Carol Comeskey, Robert Rabozzi

USHERS

Saturday: Richard Thompson

Sunday:

5 8:30 John Tullous, Vivian Alexander
11:00 Jeff and J. Hollamon, Axel Erkes
12 8:30 Randy Mallo, Joel Melito
11:00 Fred Getsinger, Jamie and Kyle Price
19 8:30 Bruce Seip, Dick Williams
11:00 Walter Brehm, Arthur Moore, Keith Geiger
26 8:30 Bill Fox and Jan Christine
11:00 Lawrence Hughes, Mark Whitmarsh

GREETERS

6:00 Jean Manley
8:30 Randy and Sheila Mallo, David and Kathren Miller
11:00 Bob and Christine Gatewood,
Beverly and Alan Hunsberger

ASSISTING MINISTERS

5 8:30 Zan Bramley
11:00 Alan Hunsberger
12 8:30 Marti Felter
11:00 Joel Peterson
19 8:30 Florence Schorschinsky
11:00 Beverly Hunsberger
26 8:30 Bethel Paris
11:00 Suzanne Whitmarsh

ACOLYTES

5 8:30 Megan Kline, Andrew Haskins
11:00 Megan Brambell, Robert Perry
12 8:30 Drew Cummings, Laurel Melito
11:00 Preston Gourville, Robert Perry
19 8:30 Morgan Piper, Hannah Stansbury
11:00 Nicholas Tucker, Bryan van der Wal
26 8:30 Andrew Haskins, Drew Cummings
11:00 Jake Wade, J. Hollamon

LECTORS

Saturday: 4-Brenda Cahill

11-Phil Bloedorn

18-Michael Vickery

25-James Harshbarger

Sunday:

5 8:30 Jerry Bramley
11:00 Linda Riesz
12 8:30 Ryan Allison
11:00 Danielle Bashaw
19 8:30 Terri Dearie
11:00 Riley Tucker
26 8:30 Melissa Holzberger
11:00 Cherry Horn

ALTAR GUILD

Saturday: Carrie McDonough

Sunday:

5 Arlene Robie, Erika Brambell
12 Kathie Tucker, Kathren Miller, Jill Cummings
19 Barbara Moore, Lynette Farmer
26 Lea Shipman, Carol Chinn

ALTAR FLOWERS

5 Art and Jan Magnus, Carol and Harry Comeskey
12 Walter and Loretta Brehm,
19 Bob and Helen Stansbury, Pete and Debbie Gimbal
26 Nell McArver, Ken and Gina Schiess

BUILDING

Saturday: Richard Thompson

Sunday Open: TBA

Close: TBA

HOSPICE DINNER

3 Cathy Aleksandravicius
17 Judy Daniels and Margaret Ballantine

NURSERY

5 8:30 Lisa and Lauren Hornick
11:00
12 8:30 Keri Rutland
11:00
19 8:30 Lisa and Lauren Hornick
11:00
26 8:30
11:00